

2D shape quiz



Problem:

Coca Cola have decided to redesign their coke cans as **cuboids**.

Is this a good idea?

es might be a

nks companies used

t your design?

Points for
discussion

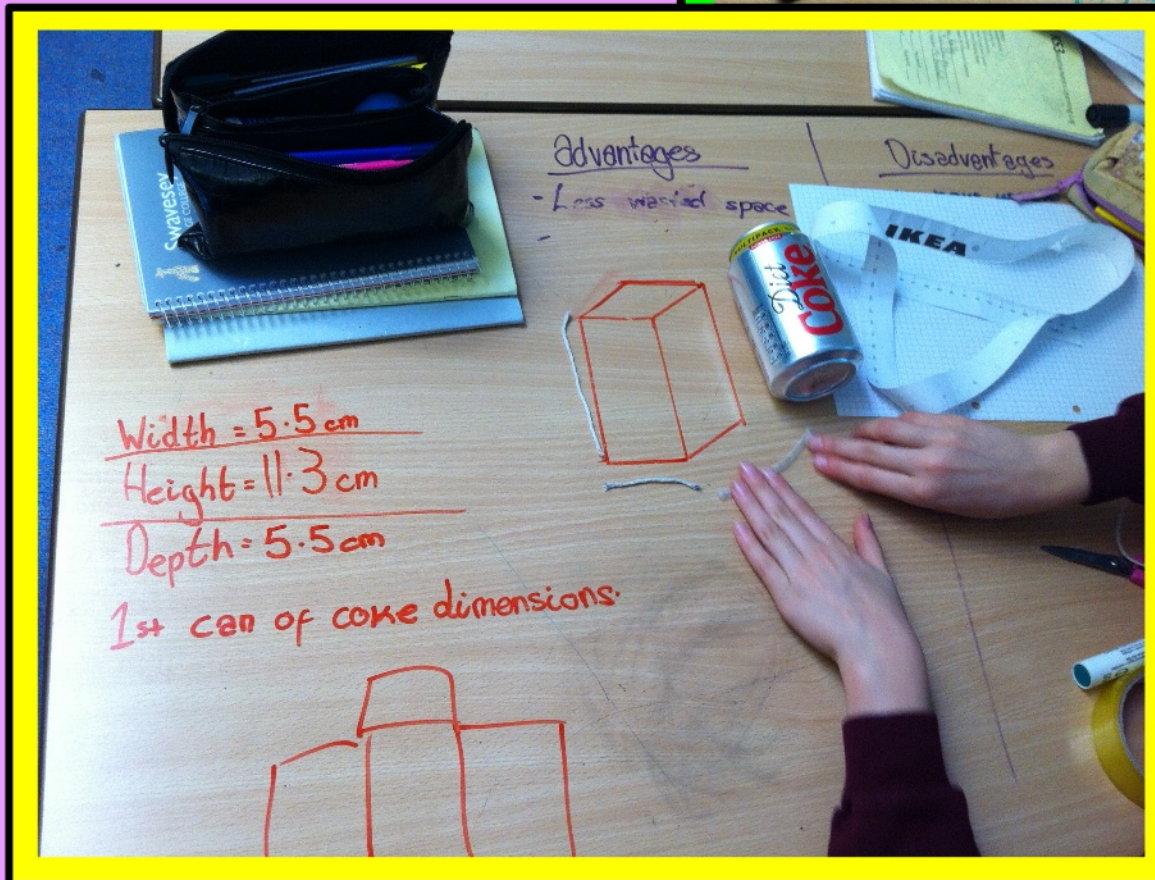
Investigate!

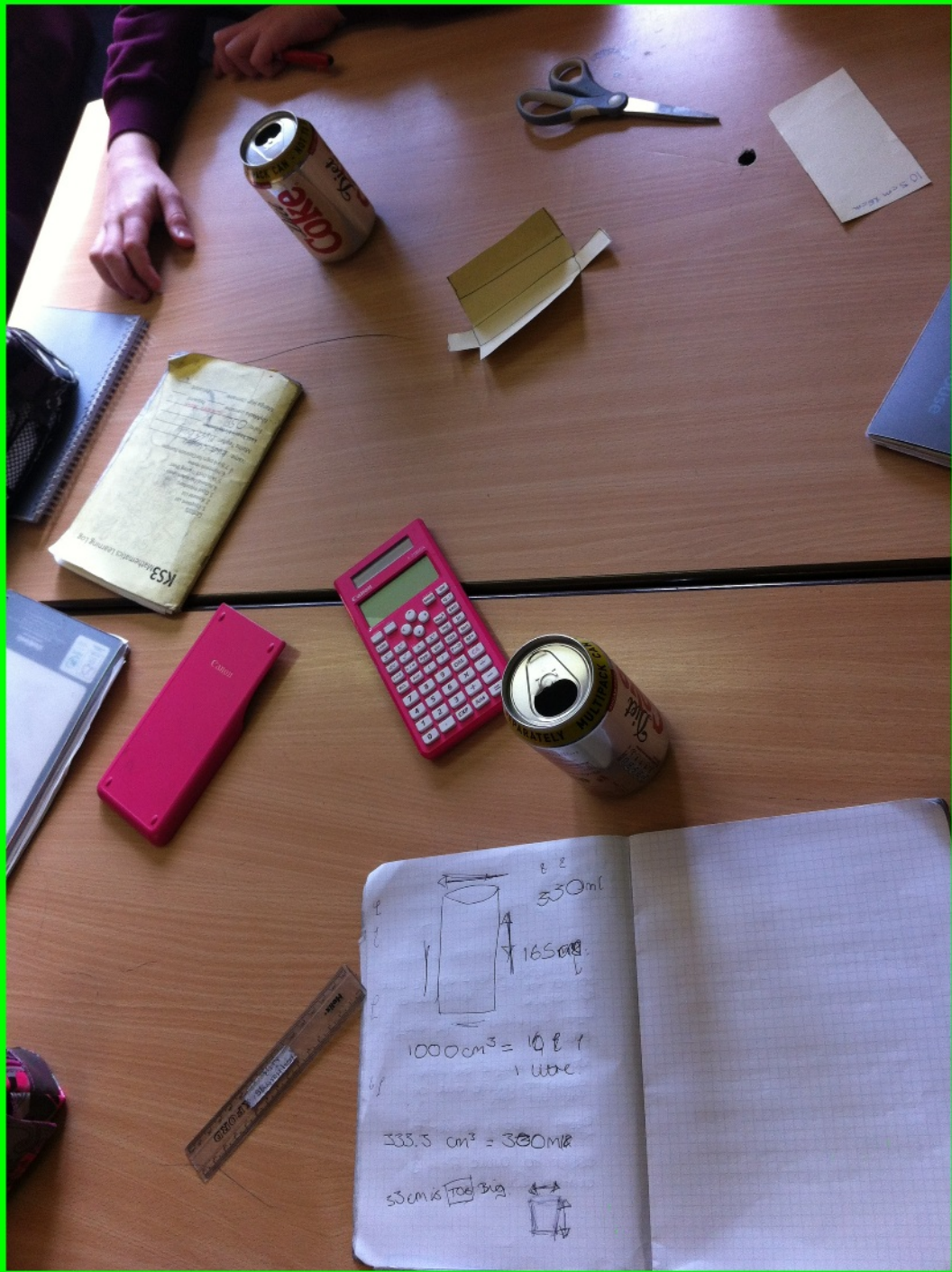


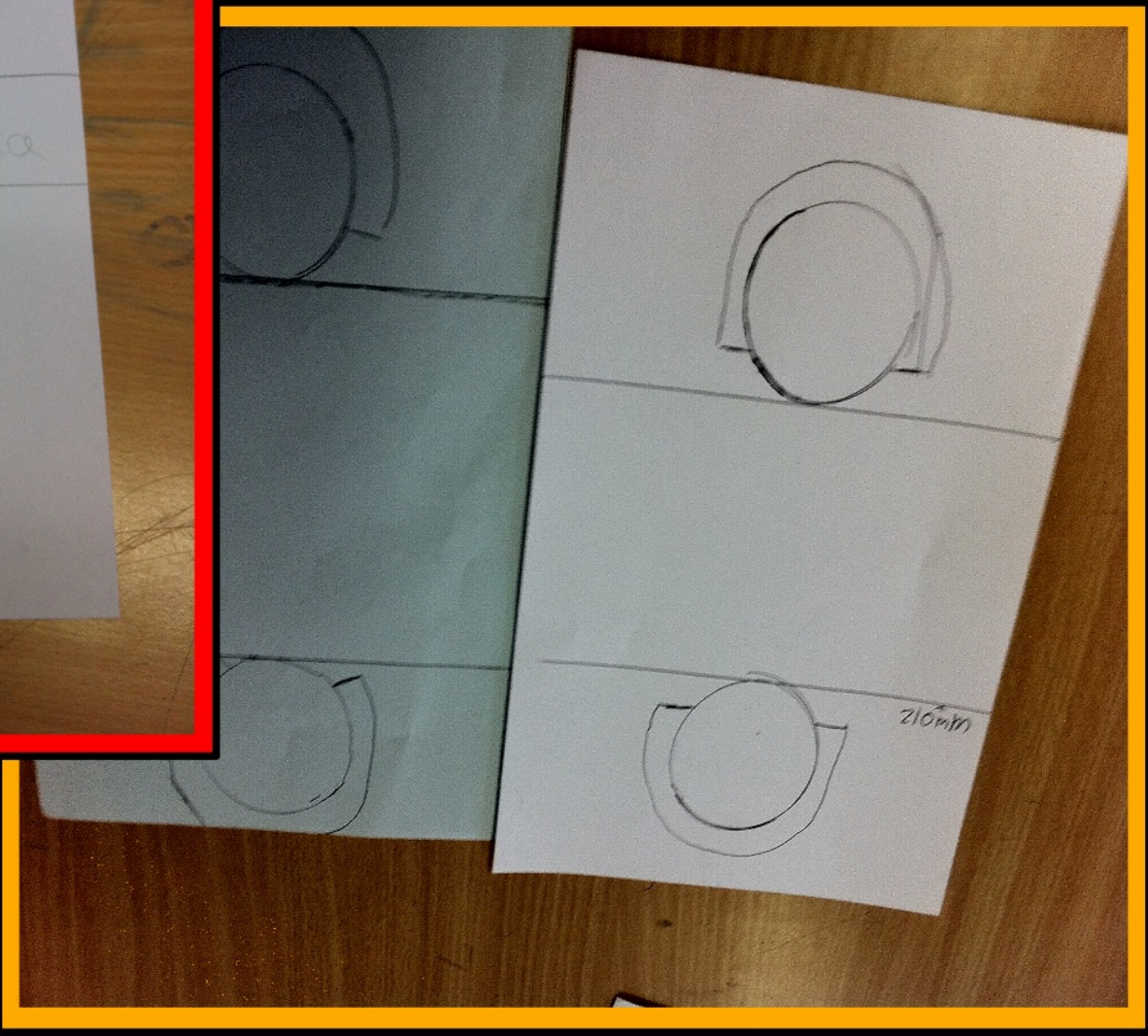
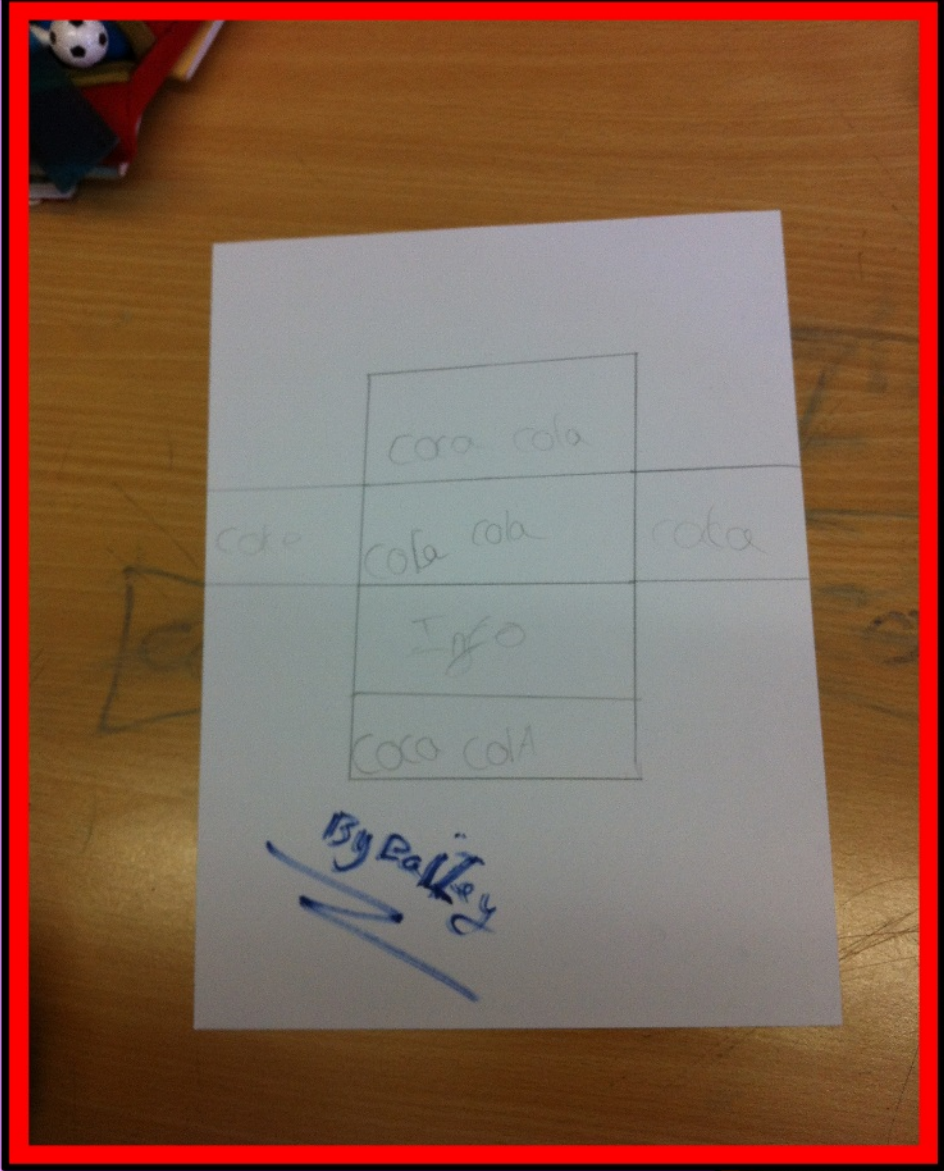
Did you know...?
1000cm³ = 1 litre
How many cm³
would there be in
330 ml?

You will need to:

1. Redesign the can and come up with at least **2** new **nets**, include all **dimensions** and **calculations** for **surface area** and **volume** which needs to be as close to **330 ml** as possible
2. Build and test the **strength** of your design **recording** your **results** and **observations** appropriately







Our initial ideas...



Dimensions of cuboids

Other possible shapes

Testing our creations...



How can we make sure we test **fairly**?

What **equipment** do we need?

How will we **record** our results?

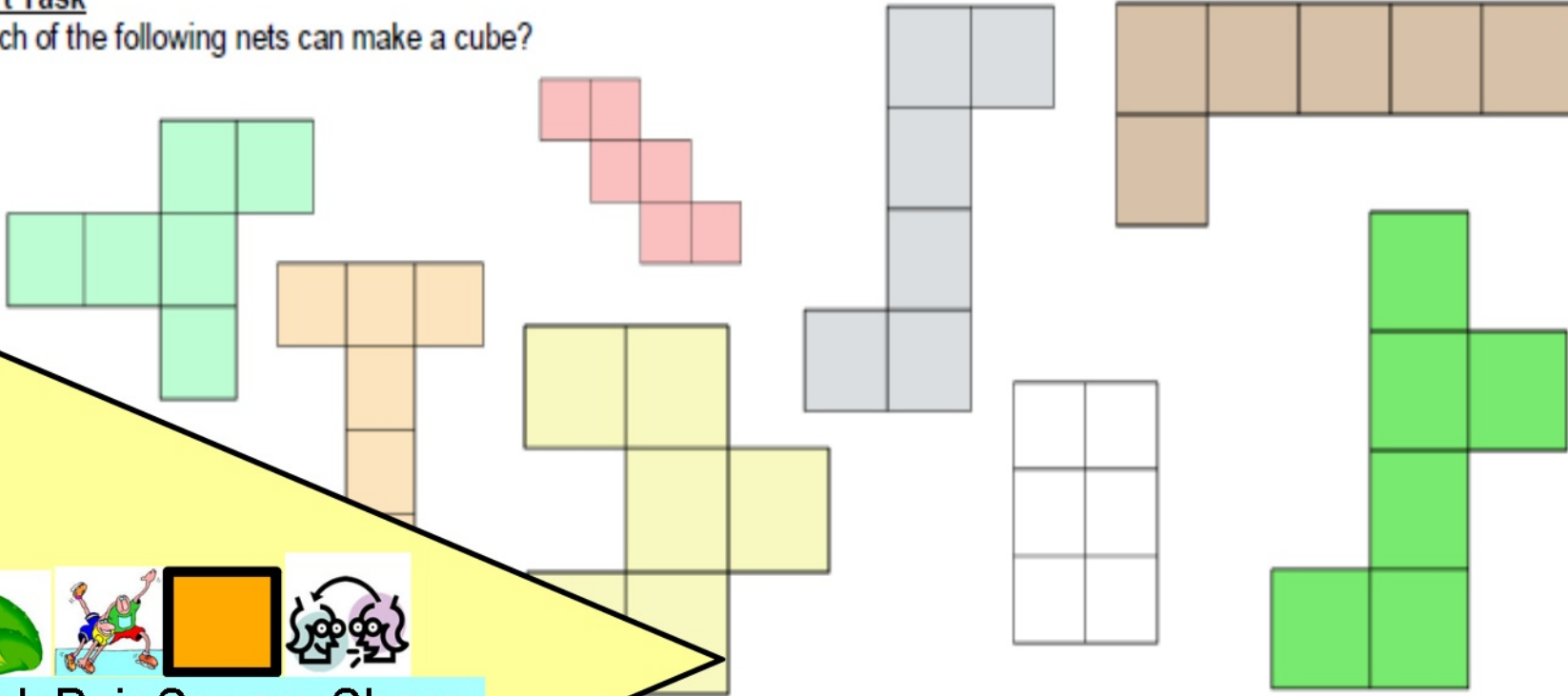
How will we **interpret** our results?

How will we **evaluate** our project?

Starter

Start Task

Which of the following nets can make a cube?



Think Pair Square Share